

ACE Connects: A Conversation with the Academic Advancement Program (AAP)

Jonli Tunstall, PhD-AAP Exec. Director
Alice Ho, PhD-AAP Senior Director
Ifeoma Amah, PhD, AAP Senior Director
Tim Mahlanza, Co-Director, Counseling

Copyright © 2026 All Rights Reserved.

UCLA

Undergraduate Education

**Academic Advancement
Program**





AAP

is one of the nation's largest university-based, multi-ethnic, multi-racial, multicultural academic support program.

The Advancement Program (AAP) was established in 1971 out of the consolidation of UCLA's Educational Opportunity Program (EOP) and High Potential Program (HPP), two early efforts to widen university access for students who had historically been underserved at the university.

- 6,000+ currently enrolled AAP members
- More than 65,000 alumni (AAPAN)
- AAP graduates the highest percentage of economically and educationally underserved students in the UC system, the California State University system, and among major public research universities in the country.

**"AAP did not
just fall out
of the sky"**





CRITICAL HISTORICAL EVENTS

March on Washington - August 28, 1963; Dr. Martin Luther King Jr.'s "I Have a Dream" speech



Watts Riots - August 11-15, 1965; One of the bloodiest and most destructive U.S. race riots

Chicano Student Walkouts - 1968; high school students in East LA protest academic prejudice and dire school conditions

HIGHER EDUCATION ACT OF 1965

AAP was formed in 1971

- Students became empowered
- Made demands on universities
- Enroll more Black and Latino students
- Enroll more women and historically underserved students
- Develop relevant curriculum
- Encourage community partnership/investment
- Develop ethnic studies centers
- State and Federal support programs (EOP and TRiO)





ETHNIC STUDIES DEPARTMENTS

**Grew out of the social movements
and civil rights struggles of the
1960s and 1970s**

African American Studies

Chicana/o/x Studies

Native American Studies

Asian American Studies





UCLA'S HIGH POTENTIAL PROGRAM

1968-1971



- Created by United Mexican American Students (UMAS) and Black Student Union (BSU) and funded by UCLA students to diversify campus
- 50 highly qualified African American and 50 Chicana/o/x & Latina/o/x high school students; Asian American students a year later
- Provided UCLA education to leaders in their community.
- Took courses and received counseling and tutoring with the aim of preparing student leaders to matriculate into UCLA



A A P

**Community
of Scholars**

MISSION

Built on principles of social justice, AAP has a threefold mission:

1. To advocate and facilitate the access, academic success, and graduation of students who have been educationally underserved;
2. Inform and prepare students for graduate and professional schools;
3. To develop the academic, scientific, political, economic, and community leadership necessary to transform society.



PEDAGOGY OF EXCELLENCE

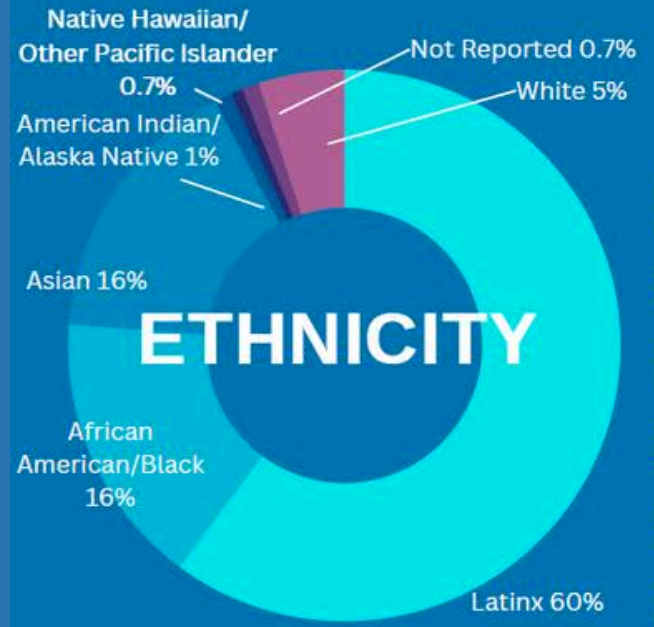
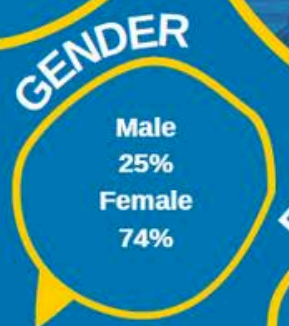
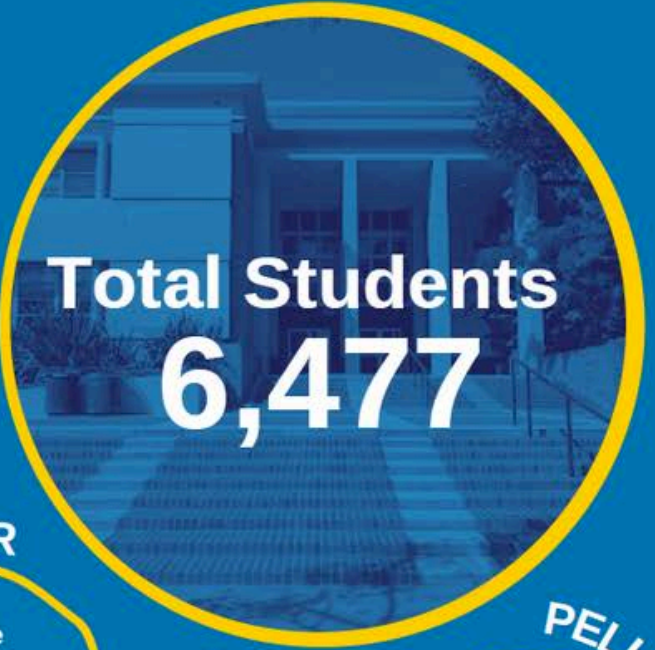
AAP's philosophy is grounded in the belief that all students have:

- **Earned their place in the university**
- **Potential to excel**
- **Potential to graduate**
- **Potential to succeed beyond the bachelor's**

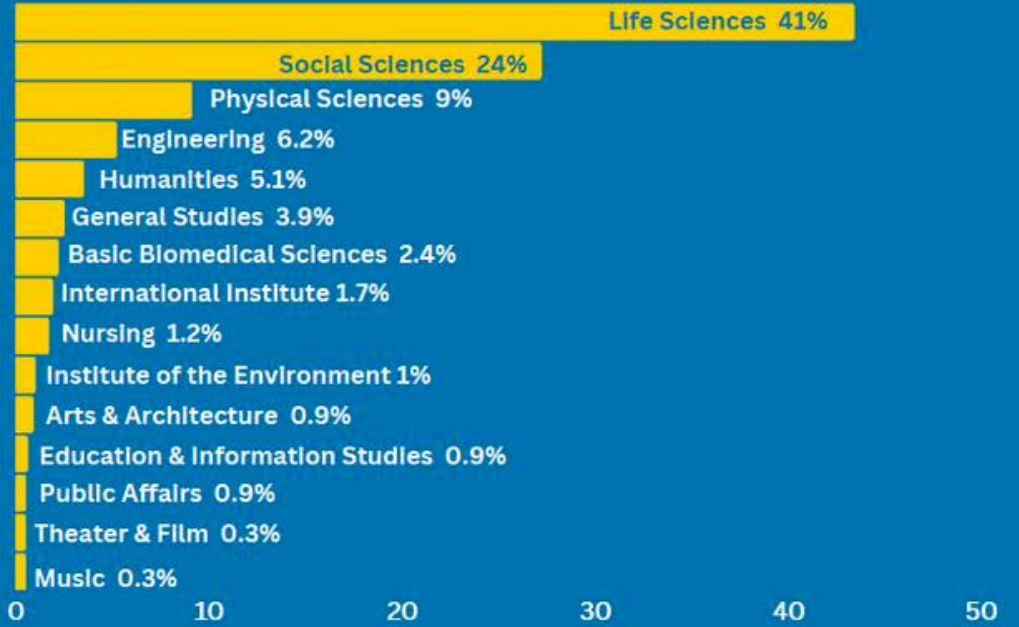


Student Profile

Fall 2025



FIELD OF STUDY



“

I'm hopeful to gain mentorship and guidance throughout college, especially since I've had a difficult time adjusting. I hope this will make college feel like home and a community.

”

*Only includes returning students prior to Fall 2025.

AAP SERVICES

Transitioning to UCLA

② NEW STUDENT PROGRAMS



FRESHMEN & TRANSFER
SUMMER PROGRAM

At UCLA

③ COLLEGE COUNSELING



PEER COUNSELING

④ PEER LEARNING



PEER LEARNING FACILITATORS

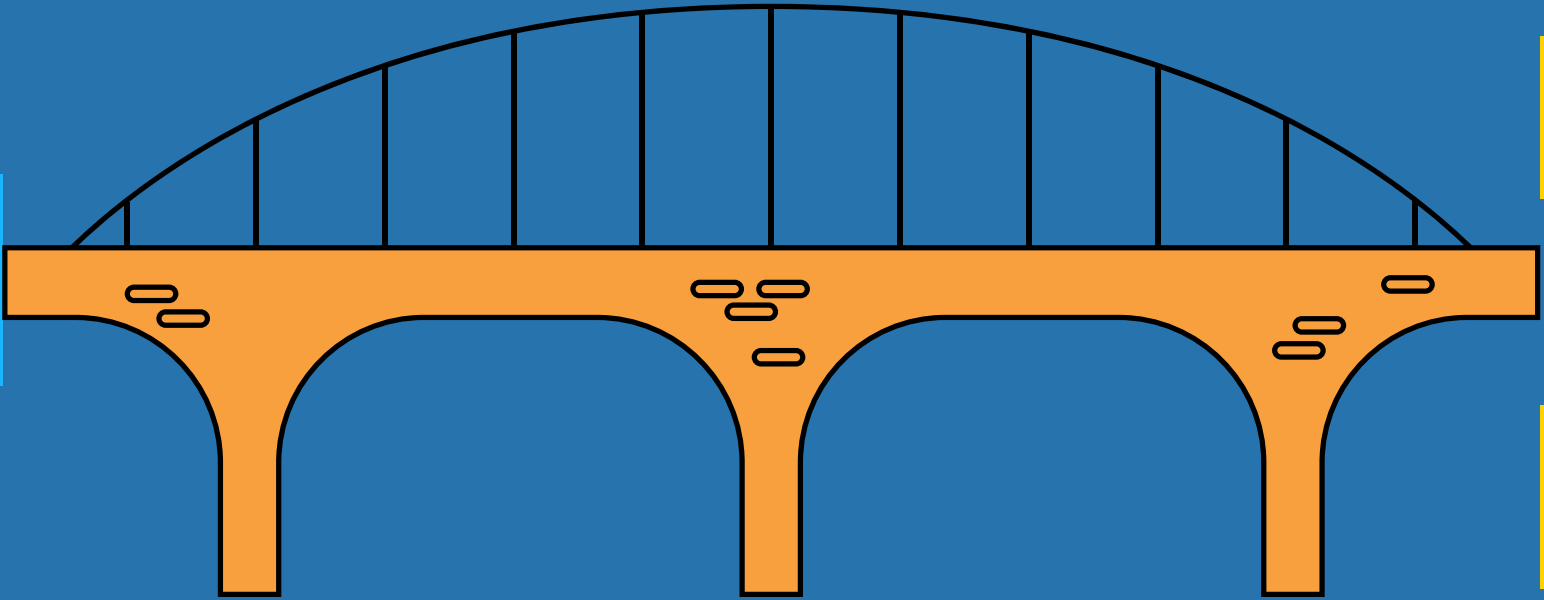
⑤ TRIO - MCNAIR RESEARCH
SCHOLARS PROGRAM



GRAD PEER MENTORS

Before UCLA

① VIPS





Vice-Provost's Initiative for Pre-College Scholars

ESTABLISHED IN 2005

- Partnership between UCLA and the Los Angeles and Pasadena Unified School Districts (11 high schools)
- Prepares educationally disadvantaged and underserved high school students to become competitively eligible for admission to UCLA and other universities
- Services: mentoring, college advising, academies, workshops, tutoring, summer programs, leadership, employment and research opportunities



1218 Campbell Hall
vips@college.ucla.edu



Center for Community College Partnerships (CCCP)

Current transfer students inquire about CCCP
peer advising positions and volunteer opportunities.
2211 Campbell Hall

UCLA Undergraduate Education
Center for Community College Partnerships

- Strengthens academic partnerships between UCLA and ALL 116 California Community Colleges and more intensely with the P2TT 17 current partnerships
- Equity focus on first-generation, low-income, non-traditional and/or underserved California Community College students to improve students' academic preparation and competitiveness for admission
- Cohort-based Scholars Program includes summer experiences, year-long Peer Advising from current UCLA transfer students, quarterly Academies, and more
- Works to enhance transfer-sending and transfer-receptive cultures through initiatives such as HSI Retention, STEM and Innovation

**Scan to learn
more**



New Student Programs

CAMPBELL HALL 1230

aapnewstudents@college.ucla.edu

- Serves as the **entry point** for students who choose to become AAP members
- Provides leadership and support to AAP's **academic and inclusive excellence** initiatives
- Program development, curriculum initiatives, assessment of student learning outcomes and yield activities
- Freshmen/Transfer Summer Programs



Freshmen/Transfer Summer Program

F/TSP is a seven-week academic, residential, cohort summer program that prepares first generation, low-income, and/or historically underserved students to successfully transition to UCLA through targeted:

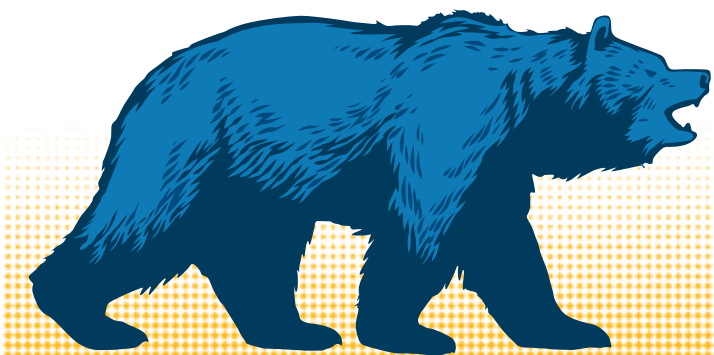
Earn **9-12 units** towards your degree and/or graduation requirements

Receive **personalized attention** from Professors, Teaching Assistants, Academic Counselors, Peer Learning Facilitators, & Peer Counselors

Full & Partial **Scholarships** available for F/TSP

Gain a **head start** at UCLA by connecting with campus programs, academic resources, & research opportunities

Build a **lifelong community** & **lifetime of memories**



Counseling & Peer Counseling

- A community of advisors comprised of 7 AAP College Counselors and 9 undergraduate Peer Counselors
- Provides a continuity of care
- Work with students to develop an academic plan leading to degree completion in Letters & Science
- Assist in giving various academic options that fit your personal/career goals
- Provide information and workshops about various campus resources and opportunities

Campbell Hall 1205
Message Center



Academic Advising

WHAT IS PEER COUNSELING?

Peer Counselors are trained with a student-centered approach to meet the needs of AAP students who entered UCLA as either a Freshman or Transfer.

PCs educate students about academic policies and procedures, while identifying options and alternatives within the University system.

We are available to meet through counseling appointments via Zoom or In-Person!

UCLA Undergraduate Education Academic Advancement Program

UCLA Undergraduate Education Academic Advancement Program

AAP COUNSELING

WHERE SHOULD I ASK MY QUESTION?

<p>REACH</p> <p>VIRTUAL DROP INS (MYUCLA>ACADEMICS TAB>REACH VIRTUAL ADVISING)</p>	<p>Brief virtual advising support for students in the College of Letters & Science (10 mins max)</p> <ul style="list-style-type: none"> Request an appointment General petition information/status updates Senior Graduation Checks Quarter program planning only (not full degree planning) Signature for SAP financial aid appeals
<p>HUB</p> <p>MONDAY - THURSDAYS 12PM-2PM (CAMPBELL HALL 1205, IN-PERSON)</p>	<p>HUB staffed by AAP Peer Counselors (students) AND College Advisors</p> <ul style="list-style-type: none"> Brief general academic inquiries for College of Letter & Science Scheduling appointments (no drop-in appointments!) General academic policy and petition procedures
<p>MESSAGE CENTER</p> <p>INQUIRIES (VIA MYUCLA)</p>	<p>Due to high volume of inquiries on MC, a response can take up to 5-10 business days</p> <ul style="list-style-type: none"> Scheduling appointments: Submit your FULL availability for the following 2 weeks and your reasoning for an appointment ALL urgent matters should go through the HUB or REACH Petitions: Study List Petitions Tab on MyUCLA
<p>WE CANNOT SUPPORT IN:</p>	<ul style="list-style-type: none"> Financial Aid inquiries (financialaid.ucla.edu/Murphy Hall A-219) Specific major/minor inquiries (see departmental advisor) Specific Study Abroad Program Questions (Message Center) Enrollment into courses (PTE numbers, discussion swaps, etc.) Financial holds or holds from other departments Inquiries for majors/minors outside of the College of Letters & Science (ex: Public Affairs, Education, Engineering) IGETC & Transcript Submission (Visit Registrar's Office)

@AAP_PEER COUNSELING aap.ucla.edu

Academic Advising

UCLA Academic Advancement Program
College Academic Advising

HOW TO CONTACT

AAP COUNSELING

Spring 2026

REACH DROP-IN



[On Zoom] 10 min.

Monday
11am - 2pm

Tuesday - Friday
10am - 2pm

Not supported by Safari, use
a different browser.



COUNSELING HUB

[In Person] @ 1205 Campbell Hall

Monday - Thursday
12 pm - 2 pm

Appointment setting and
quick questions.

*Counselors will be present



MESSAGE CENTER



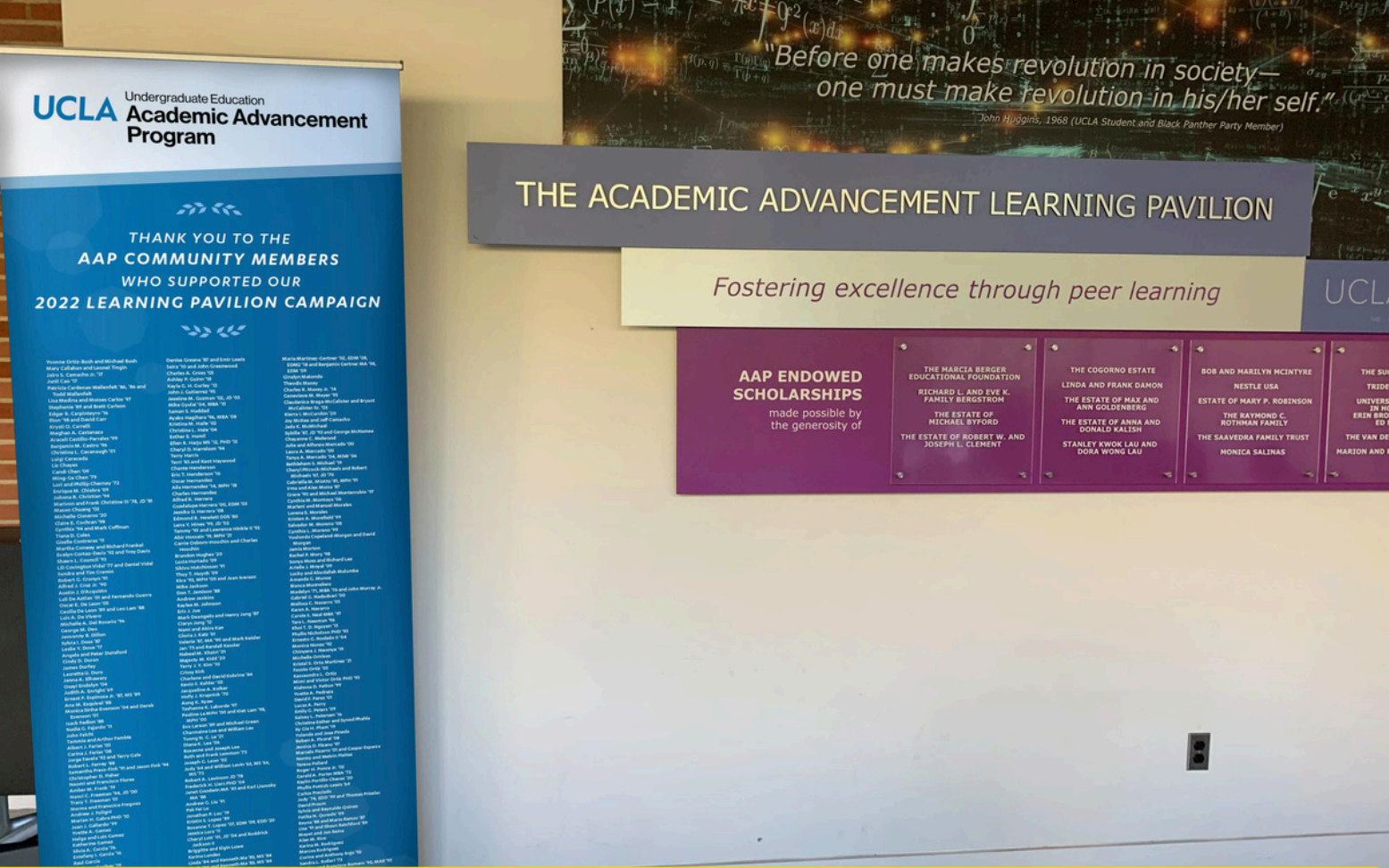
Reserved for general advising questions and
appointment setting.

Responses will be sent
within 2-3 business days.



@aap_peercounseling





Peer Learning

A Community of Learners

- Free Peer Learning offered to all AAP students
- Interactive individual and small group sessions led by Peer Learning Facilitators (PLFs) across subject areas
- Think critically and independently, read analytically, write well, interdisciplinary reasoning, and study effectively while mastering course materials



A photograph of a modern university building with a large window and a set of stairs leading to an entrance. The building is light-colored with a prominent overhang. The sky is overcast.

Peer Learning

- Once an AAP member, check enrollment pass date and time (based on your class standing) to sign up for PL sessions.
- First come, first served so sign up ASAP
- Sign-up begin Wed. Week 1 through Friday Week 3 each qtr
- If the PL session(s) are full, use the *Wishlist* located under Peer Learning on MyUCLA
- Peer Learning Unit team will contact you through the *Wishlist* as courses are added

1214 Campbell Hall
AAPpeerlearning@college.ucla.edu

McNair Research Scholars Program

Two-Year Research Intensive Program

- Independent Research with Faculty
- Graduate School Prep and Mentorship
- Application Fee Waivers and Support
- Stipends up to \$14,000
- Course Credit
- Conferences & Undergraduate Research Week

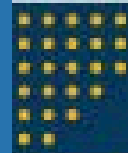
Eligibility: U.S. Dept of Education *TRIO* Program

- First Generation *and* Low Income
- Goal of graduate school right after undergrad
- Applications Open Fall Quarter



@ucla_mcnairscholar

1202 Campbell Hall
mcnair@college.ucla.edu



HIGH AIMS PROGRAM

The goal of HIGH AIMS is to support UCLA undergraduate students interested in pursuing a health profession through mentoring, academics, and career guidance.

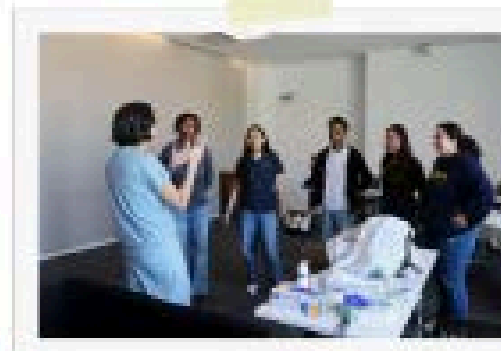


PROGRAM DETAILS:

High AIMS is a one-year commitment for the 2026-2027 academic year

ELIGIBILITY:

- Current UCLA student in good standing and a member of the Academic Advancement Program (AAP).
- Have a minimum overall GPA of 3.0; must maintain at least a 3.0 GPA each quarter to remain eligible to continue in the program until graduation
- Interested in pursuing medicine or a health profession
- Currently enrolled in their first or second year at UCLA. Recent transfer students are encouraged to apply (transferred by Fall 2025 to UCLA)



PROGRAM BENEFITS:

- Participants will receive a stipend of up to a \$1,500/year alongside opportunities to participate in clinical experiences, research, Saturday Seminars, program meetings, and specialized workshops



APPLY NOW!



Questions? Email: highaims@mednet.ucla.edu



UCLA Undergraduate Center for
Academic Advancement
Program

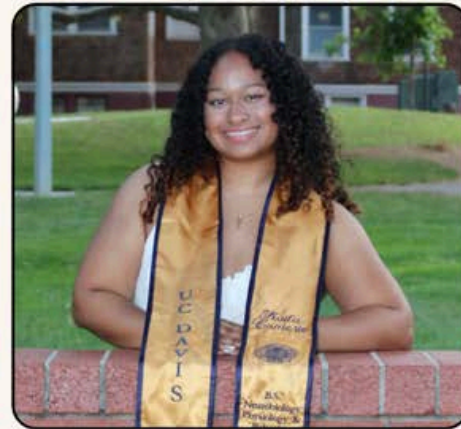
UCLA Center of Excellence

High AIMS is a collaboration between UCLA AAP, PRIME-LA, and the COE.

Graduate Peer Mentors

UCLA Undergraduate Education
Academic Advancement
Program

Meet our AAP Graduate Peer Mentor!



HELLO, I'M

Kaila Comerie

ABOUT ME

I am a 1st year Master's of Public Health Student in Community Health Sciences from Stockton, CA. I graduated from UC Davis in June 2025 with a B.S in Neurobiology, Physiology, and Behavior and a minor in Public Health Sciences. I am passionate about reproductive justice and reducing maternal health disparities within Black and Latina communities :)

SCHEDULE A MEETING TODAY!

Come to **1202 Campbell** to chat or email me at kcomerie@college.ucla.edu to schedule an appointment!

SPRING QUARTER HOURS

Mon: 2:00pm - 4:00pm
Tues: 1:00pm - 4:00 pm
Thurs: 9:00 am - 2:00pm

Look out for my "Summer Before Grad Apps" workshop and other AAP workshops this quarter!

UCLA Undergraduate Education
Academic Advancement Program

Meet our Grad Peer Mentor



Marine Scientist



First-Gen Student

Crystal Barajas

About Me

Crystal Barajas (she/her/ella) is a proud first-generation Latina born and raised in Los Angeles. She is currently a Master's student in the Ecology and Evolutionary Biology department at UCLA. Her research focuses on using a community science approach and passive eDNA sampling as a biomonitoring tool to conserve biodiversity. She previously transferred from LA community college to UC Santa Barbara where she earned her BS in Aquatic Biology. She has experience working for an environmental non-profit, art museums, and doing policy work.

Spring Quarter Hours

Mondays 12:30pm - 3:30pm

Tuesdays 11am- 2:30pm

Thursdays 11am- 2:30pm

Upcoming Workshops

Utilizing your Growth "Gap" Year

Schedule a Meeting Today

Stop by our office at 1202 Campbell Hall and schedule an appointment or email me directly

✉ cbarajasrivera@college.ucla.edu

AAP Scholarships

The Academic Advancement Program (AAP) awards scholarships to AAP students each academic year.

The average scholarship award is \$2,500-5,000.

Eligibility Requirements:

1. Must be a member of AAP
2. Submit application for FAFSA or the Dream Application
3. Must have completed 36 units of UCLA credits
4. Minimum cumulative UCLA GPA of 2.75 or better
5. Must be enrolled as a full-time undergraduate



AAP Computer Lounge

20

WORK STATIONS



**Microsoft Office,
email & internet
access**



**FREE
self-service
printing***

**10 page max*



**Monday - Friday
11am - 2pm
B118 Campbell Hall**

UCLA

Undergraduate Education

**Academic Advancement
Program**



Follow us 



Instagram:
@aapucla

CONTACT US

1232 Campbell Hall

(310) 206-1551

aapinfo@college.ucla.edu

www.aap.ucla.edu



The UCLA logo consists of the letters "UCLA" in a white, bold, sans-serif font, centered within a solid blue rectangular box.

UCLA

Undergraduate Education

**Academic Advancement
Program**